



15. Add some Tombow liquid glue onto the ½" circle, not too much.
16. Attach the five large Lovely Lipstick leaves, so that they sit between the Call Me Clover leaves.
17. Cut ten small leaves from Lovely Lipstick card using the small leaf die.
18. Emboss the large leaves by laying them back into the emboss leaf die. (Use the same platform that we use for embossing folders, lay the die on its back, place the cut leaf into the die with the right side face down, lay on top the dark blue embossing mat and then the which plate.) (Note you only need to emboss the one leaf you cut.)
19. Fold each of the leaves along the centre score line.
20. Use your bone folder to curl the leaves.
21. Punch a ½" circle from Lovely Lipstick card.
22. Attach the Lovely Lipstick ½" circle over the centre of the large Lovely Lipstick leaves.
23. Add some Tombow liquid glue onto the ½" circle, not too much.
24. Attach five small Lovely Lipstick leaves so that they sit between the large Lovely Lipstick leaves.
25. Punch a ½" circle from Lovely Lipstick card.
26. Attach the Lovely Lipstick ½" circle over the centre of the five small Lovely Lipstick leaves.
27. Add some Tombow liquid glue onto the ½" circle.
28. Attach the remaining five small Lovely Lipstick leaves so that they sit between the first row of small Lovely Lipstick leaves.
29. Punch a ½" circle from Lovely Lipstick card.
30. Attach the Lovely Lipstick ½" circle over the centre of the small Lovely Lipstick leaves.
31. Add a large Gold Faceted Gem to the centre of the ½" Lovely Lipstick circle.
32. Attach Ribbon to the back of the ornament.
33. Punch a 1-1/2" circle Whisper White card.
34. Write a message on the 1 ½" Whisper White card.
35. Attach the Whisper White circle to the back of the ornament to help keep the ribbon attached.

## Presentation Box



1. Cut Lovely Lipstick card 15cm x 28.5cm.
2. Score along the 15cm length at 1.5cm and 13.5cm.
3. Score along the 28.5cm length at 1.5cm, 13.5cm, 15cm, and 27cm.
4. Use your bone folder to fold along all of the score lines.
5. Snip into the 1.5cm and 13.5cm score lines up to the 1.5cm score line on the 15cm lengths on each end.
6. Snip into the 13.5cm and 15cm score lines up to the 1.5cm score line on the 27cm length.
7. Fold and assemble the box.
8. Stamp the swirl image onto Whisper White card 11cm x 11cm using Call Me Clover ink.

9. Attach the stamped Whisper White card to Call Me Clover card 11.5cm x 11.5cm.
10. Attach the panel to the top of the box.
11. Stamp the flower onto Whisper White card using Lovely Lipstick ink.
12. Cut out the image using the oval framelit die.
13. Cut a scalloped oval from Call Me Clover card.
14. Attach the stamped oval to the scalloped oval.
15. Attach the oval to the top of the box.
16. Stamp the flower onto scrap Whisper White card using Lovely Lipstick ink.
17. Cut out the flower.
18. Stamp the leaf image twice onto scrap Whisper White card using Call Me Clover ink.
19. Cut out the leaves.
20. Attach the leaves behind the flower.
21. Attach the second flower over the top of the stamped flower using dimensionals.
22. Add three basic rhinestones to the centre of the flower.

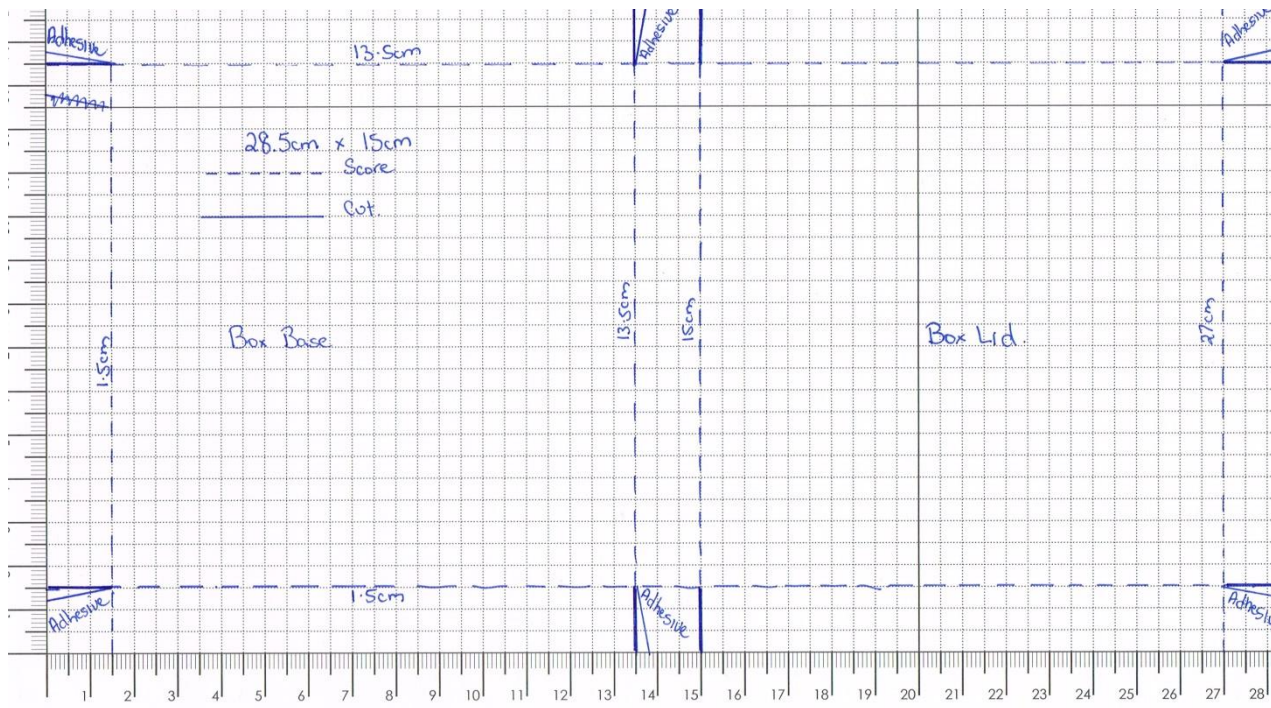
Additional images.





Template for presentation box.

Please note that this is not to scale. Please check the instructions for sizes.



I hope you have enjoyed making your ornament and presentation box today and that you find the instructions useful in the future.

*Kris*

Kristine McIntosh  
Independent Stampin' Up! Demonstrator  
Brisbane, Australia  
0429668535  
[krismac8@bigpond.com](mailto:krismac8@bigpond.com)

Blog: [www.stampingwithkris.com](http://www.stampingwithkris.com)  
Web: [www.krismcintosh.stampinup.net](http://www.krismcintosh.stampinup.net)  
Facebook: <http://www.facebook.com/pages/Stamping-With-Kris/187579114586591>